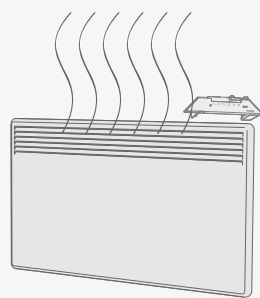
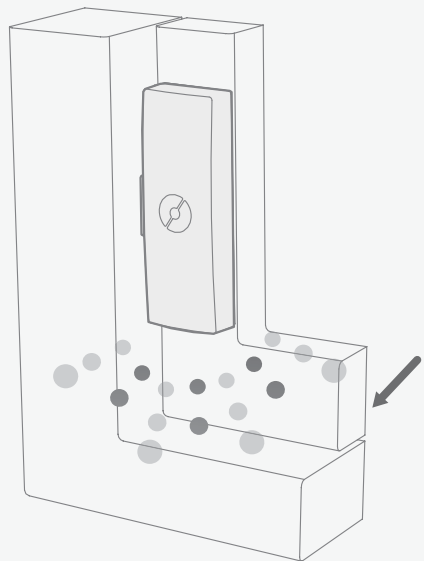




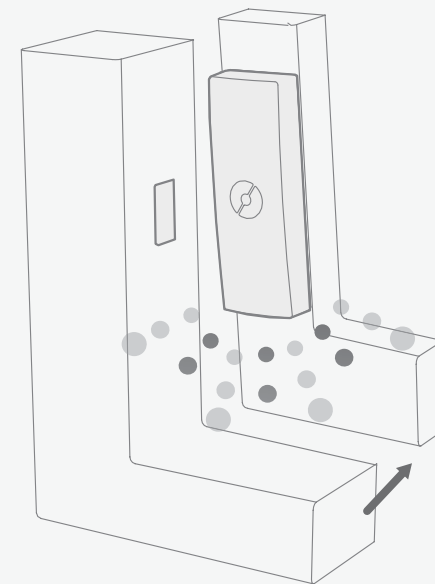
Lukket  
Closed



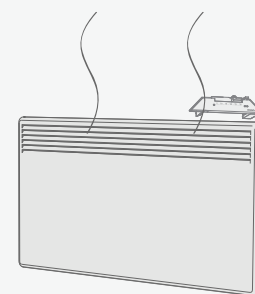
Normal



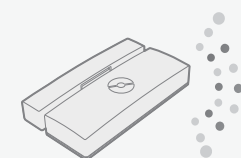
Åpen  
Open



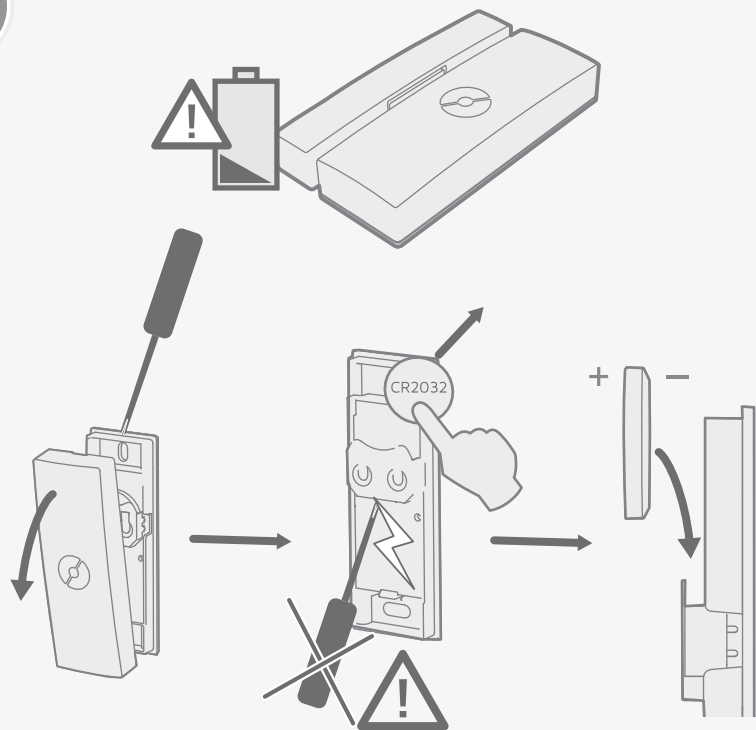
Frostsikring 7°C  
Frost protection 7°C



CR2032, 3V



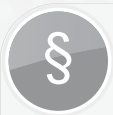
RF 868,4 MHz



**NOBO**  
energy control

**ECOSENSE MSW**  
Wireless magnet switch

Brukerveiledning  
User guide



CE

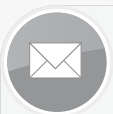


SAMSVARERKLÆRING (DoC).

Glen Dimplex Nordic AS erklærer herved at utstyret som er beskrevet i denne anvisningen (ECOSENSE MSW) oppfyller alle vesentlige krav og andre relevante bestemmelser i EU- direktiv 1999/5/EF (R&TTE).  
Ved behov for kopi av DoC kan forespørsel sendes til: [email@glendimplex.no](mailto:email@glendimplex.no)

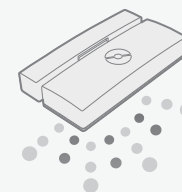
DECLARATION OF CONFORMITY (DoC).

Glen Dimplex Nordic AS declares that the equipment described in this user guide (ECOSENSE MSW), is in compliance with the essential requirements and other relevant provisions of EU Directive 1999/5/EC (R&TTE).  
If you require a copy of the original signed DoC, please send an E-mail to: [email@glendimplex.no](mailto:email@glendimplex.no)



**Glen Dimplex**  
NORDIC

Havnegata 24, box 16, NO-7501 Stjørdal, NORWAY  
[www.glendimplex.no](http://www.glendimplex.no)  
[email@glendimplex.no](mailto:email@glendimplex.no)



R80 RSC 700

